



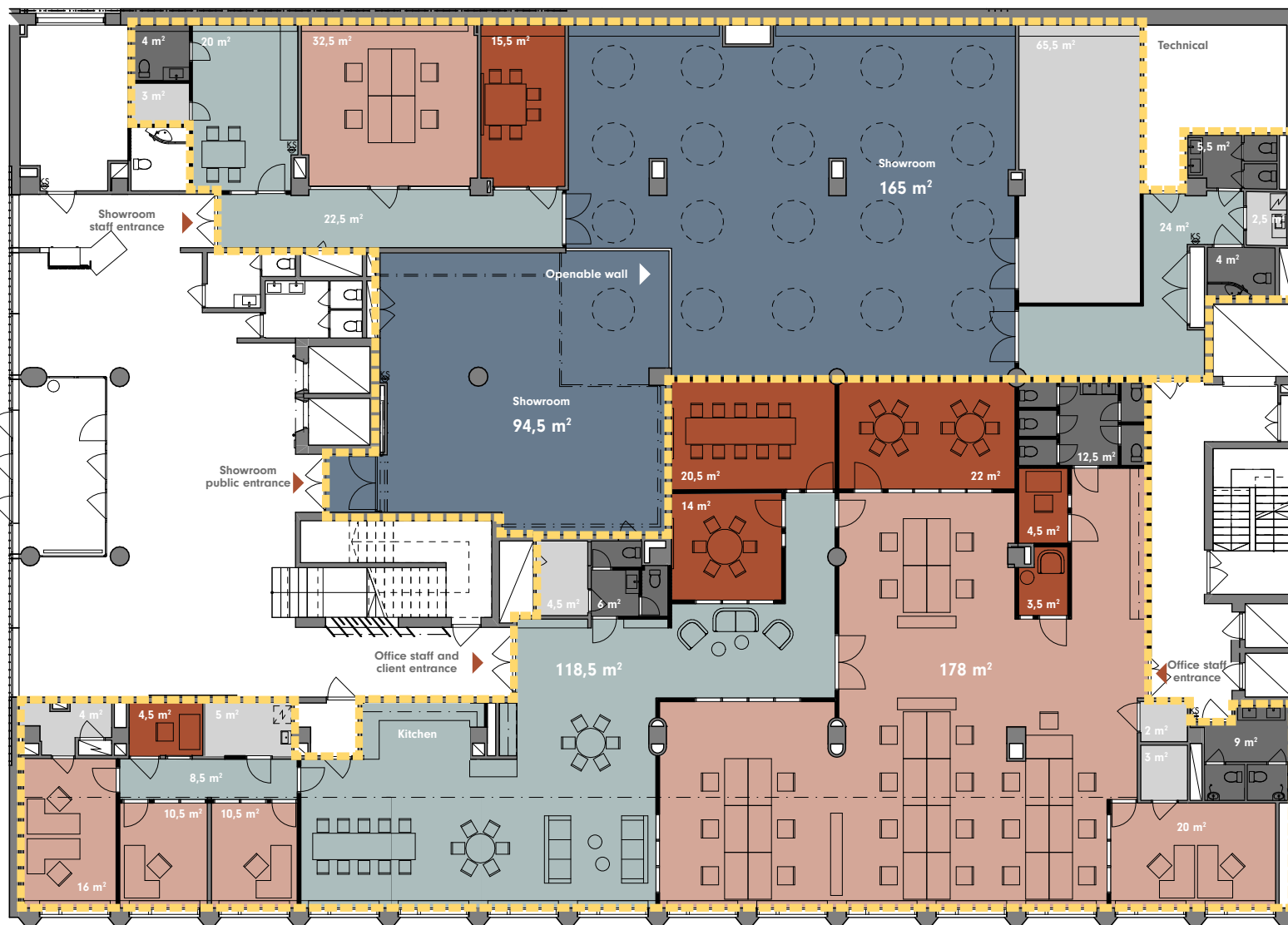
# Kanavaranta 1

**Alvar Aalto's masterpiece – Kanavaranta 1 and its modern office spaces**

Combines user-friendly space solutions and a wonderful seaside location. Become part of the story of this unique office building.

# 1st FLOOR: Office layout option Workspaces and Showroom

2.



Example layouts:

## 1. Office 499 m<sup>2</sup>

(net surface areas)

- Meeting rooms  
(for 31 persons,  
includes 3 workpods)
- Workspaces  
(for 31 persons,  
table size 800 x 1600)
- Working cafe  
and low intensity
- Toilets
- Storages

## 2. Showroom 443 m<sup>2</sup>

(net surface area)

- Showroom
- Meeting rooms  
(for 6 persons)
- Workspaces  
(for 4 persons,  
table size 800 x 1600)
- Working cafe  
and low intensity
- Toilets
- Storages

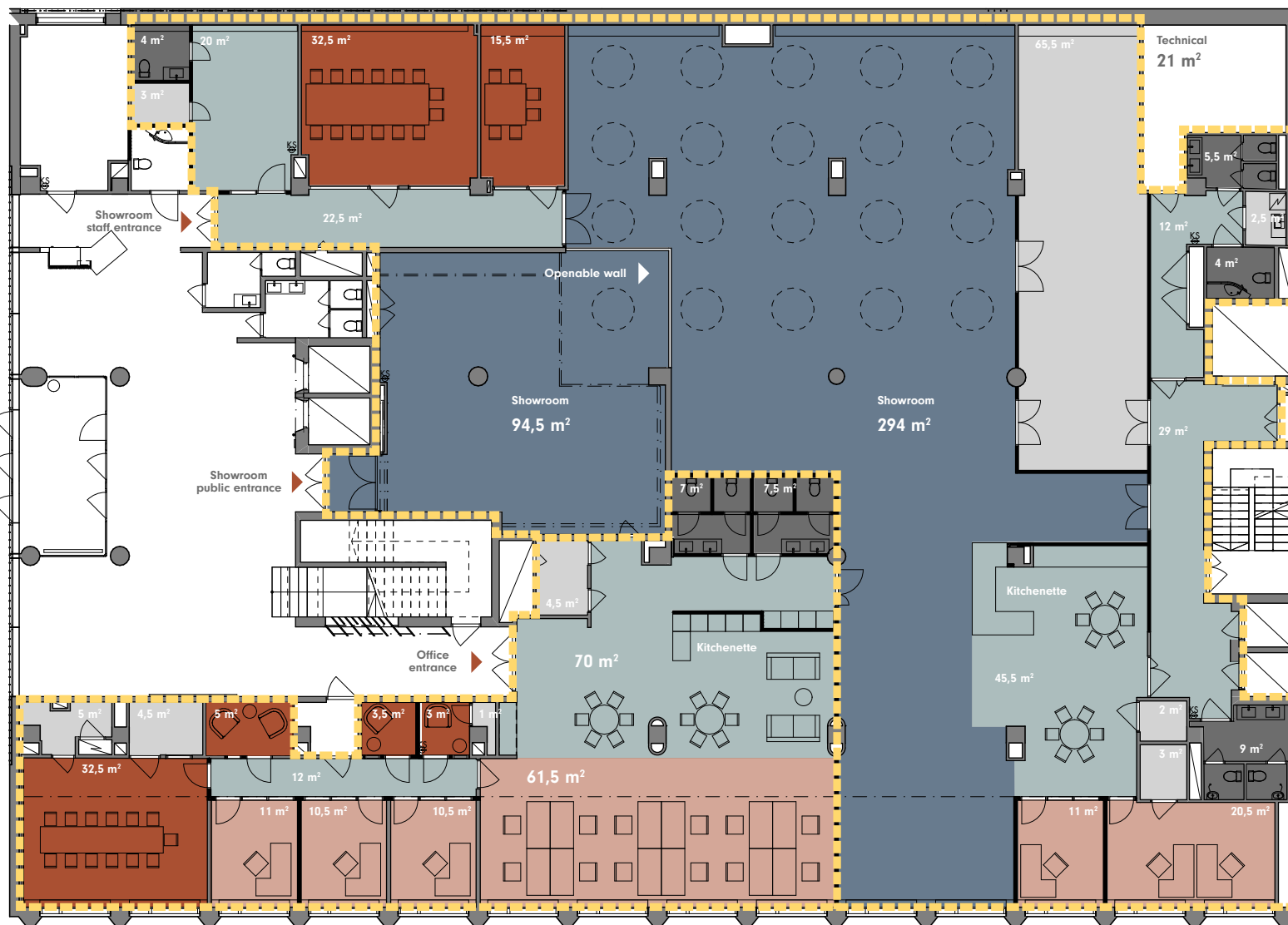
The layouts contained in this promotional material are preliminary floor plans for illustration purposes only. Changes may be made during the further planning and development. The final design and execution may deviate substantially from the preliminary drawings. To the declared floor area of the premises is added the proportional part resulting from the distribution of common areas, which is approximately 7% of the floor area.

Kanavaranta 1



# 1st FLOOR: Office layout option Workspaces ja Showroom

2.



Example layouts:

## 1. Office 260 m²

(net surface area)

- Meeting rooms  
(for 17 persons,  
includes 3 workpods)
- Workspaces  
(for 15 persons,  
table size 800 x 1600)
- Working cafe  
and low intensity
- Toilets
- Storages

## 2. Showroom 711,5 m²

(net surface area)

- Showroom
- Meeting rooms  
(for 20 persons)
- Workspaces  
(for 3 persons,  
table size 800 x 1600)
- Working cafe  
and low intensity
- Toilets
- Storages

1.

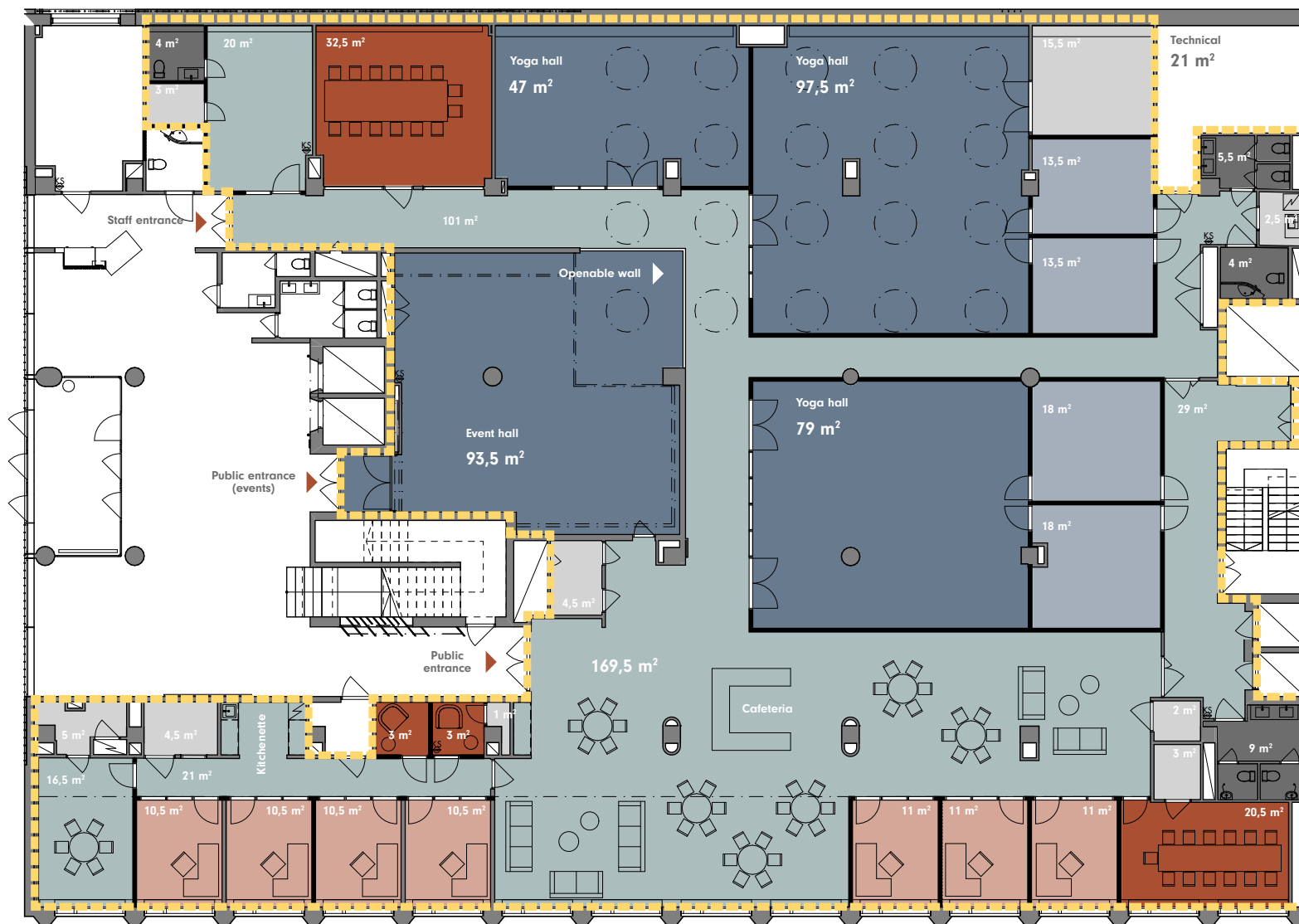
The layouts contained in this promotional material are preliminary floor plans for illustration purposes only. Changes may be made during the further planning and development. The final design and execution may deviate substantially from the preliminary drawings. To the declared floor area of the premises is added the proportional part resulting from the distribution of common areas, which is approximately 7% of the floor area.

Kanavaranta 1





# 1st FLOOR: Office layout option **Wellness**



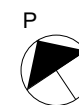
Example layout:

Net surface area **971,5 m²**

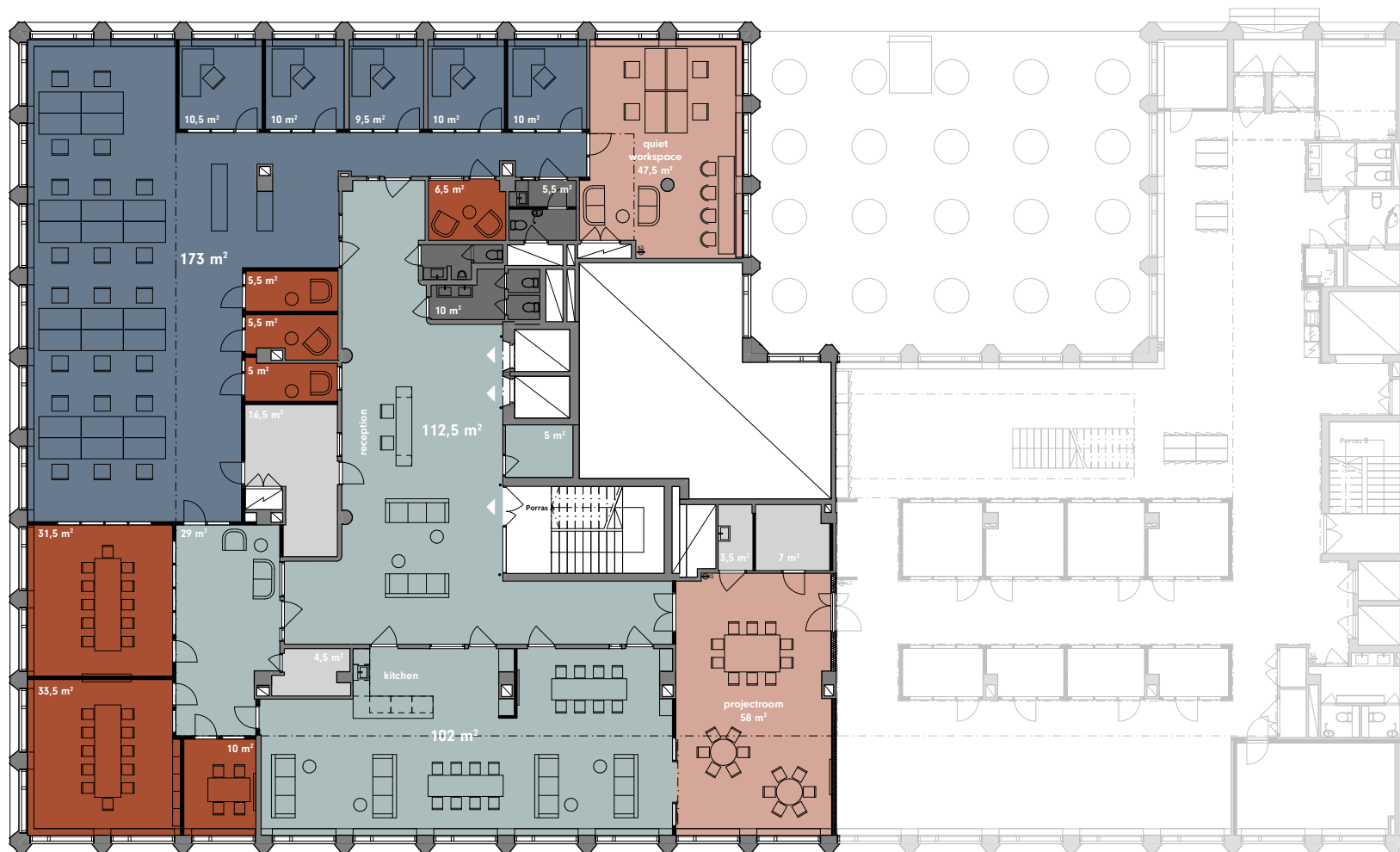
- Event and Yoga halls
- Changing rooms
- Meeting rooms  
(for 29 persons,  
includes 2 workpods)
- Consultation
- Customer lounge  
and circulation
- Toilets
- Storages

The layouts contained in this promotional material are preliminary floor plans for illustration purposes only. Changes may be made during the further planning and development. The final design and execution may deviate substantially from the preliminary drawings. To the declared floor area of the premises is added the proportional part resulting from the distribution of common areas, which is approximately 7% of the floor area.

Kanavaranta 1



# 2<sup>nd</sup> FLOOR: Office layout option Workspaces



Example layout:  
Net surface area **751,5 m²**

- Workspaces (61 workstations, table size 800 x 1600)
- Meeting rooms (5 rooms and 4 workpods)
- Divisible projectroom
- Working cafe & low intensity
- Toilets
- Storages

The layouts contained in this promotional material are preliminary floor plans for illustration purposes only. Changes may be made during the further planning and development. The final design and execution may deviate substantially from the preliminary drawings. To the declared floor area of the premises is added the proportional part resulting from the distribution of common areas, which is approximately 7% of the floor area.

Kanavaranta 1

0 10 m



## OFFICE LAYOUT OPTION

## A combination of two floors:

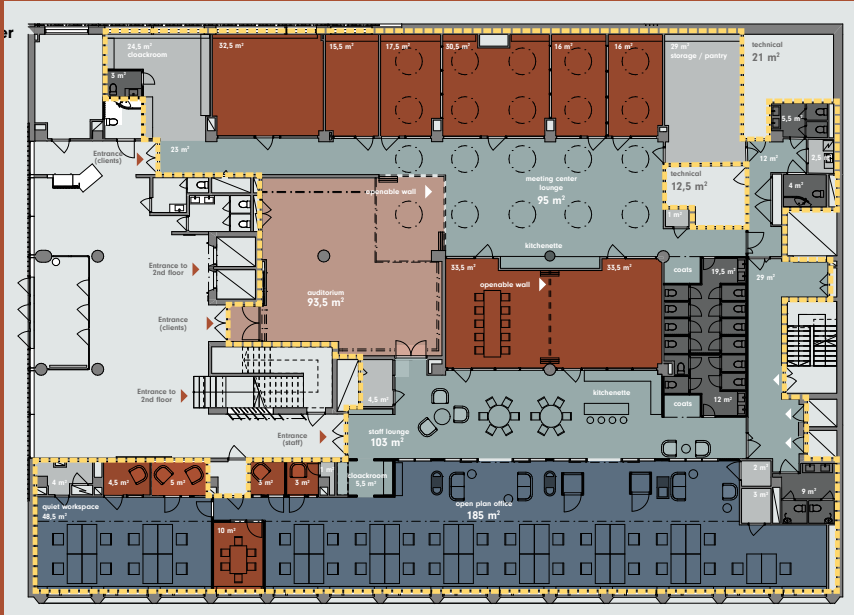
## Floor area

1st floor **959 m<sup>2</sup>**

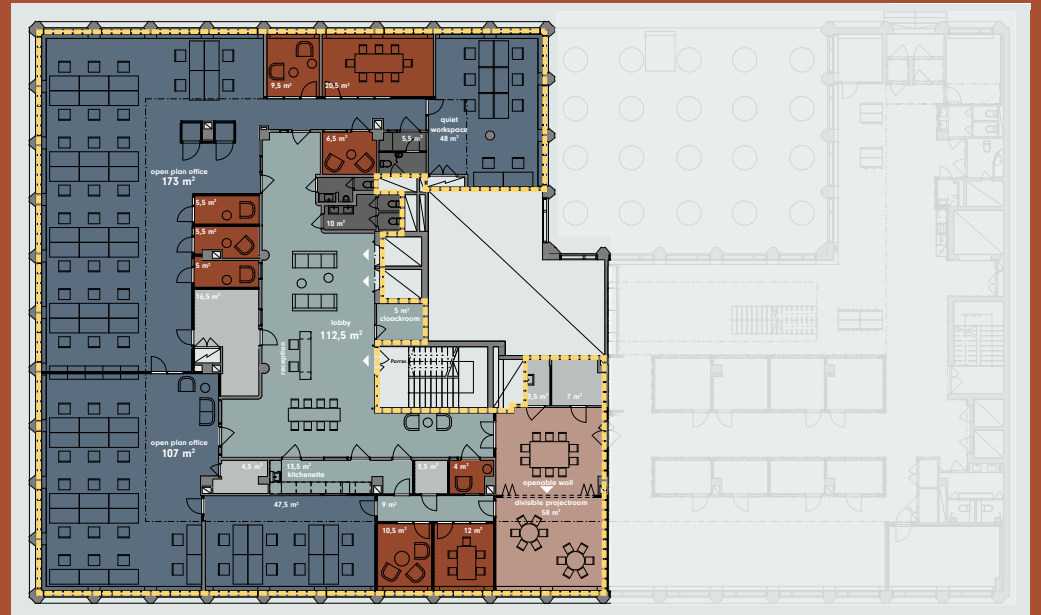
2nd floor **751,5 m<sup>2</sup>**

Total **1710,5 m<sup>2</sup>**

## 1st FLOOR



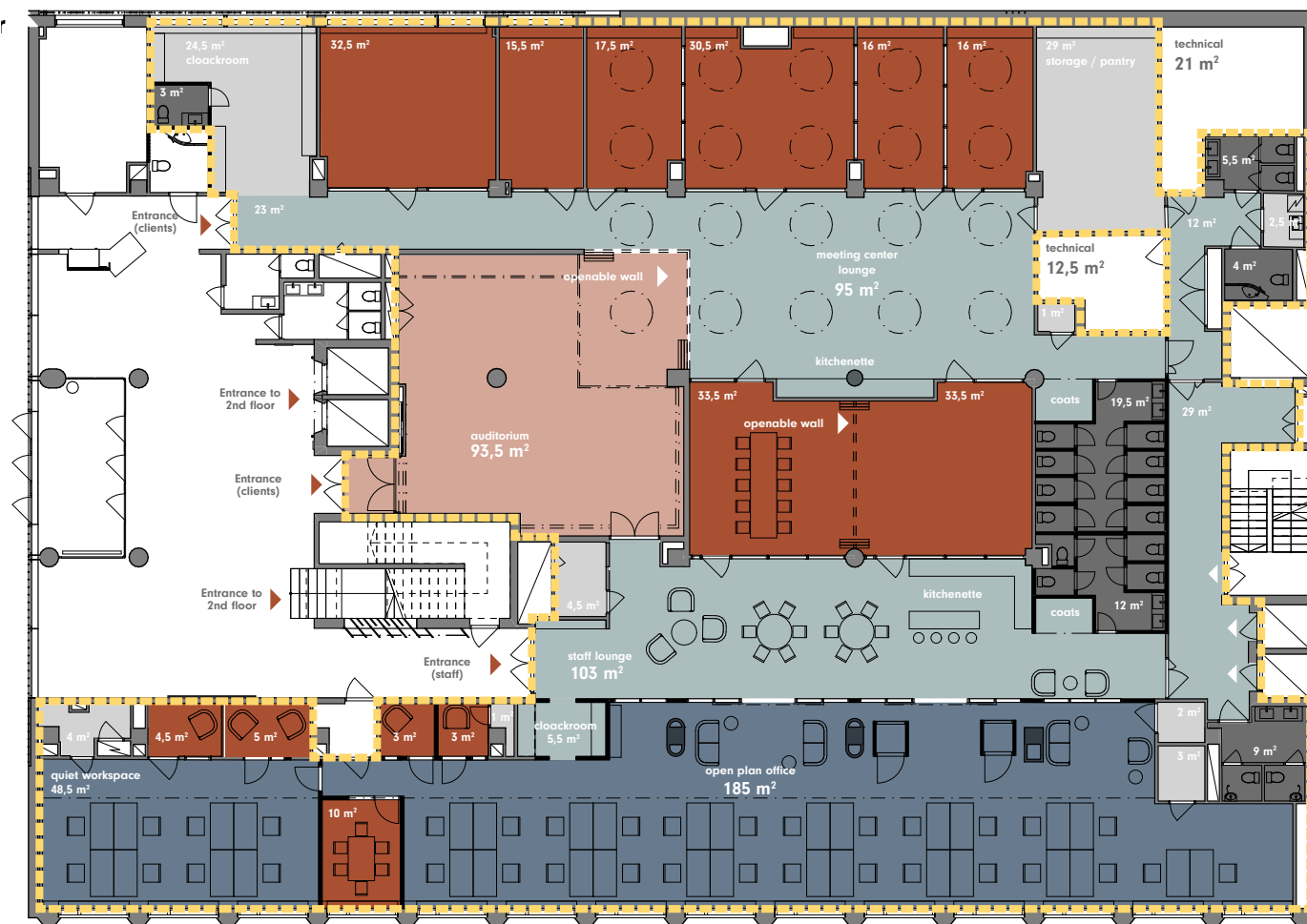
## 2nd FLOOR



95 workstations (table size 800 x 1600)

14 meeting rooms + 8 work pods

# 1st FLOOR: A combination of two floors Office and meeting space



Example layout:

Net surface area  
1st floor **959 m²**

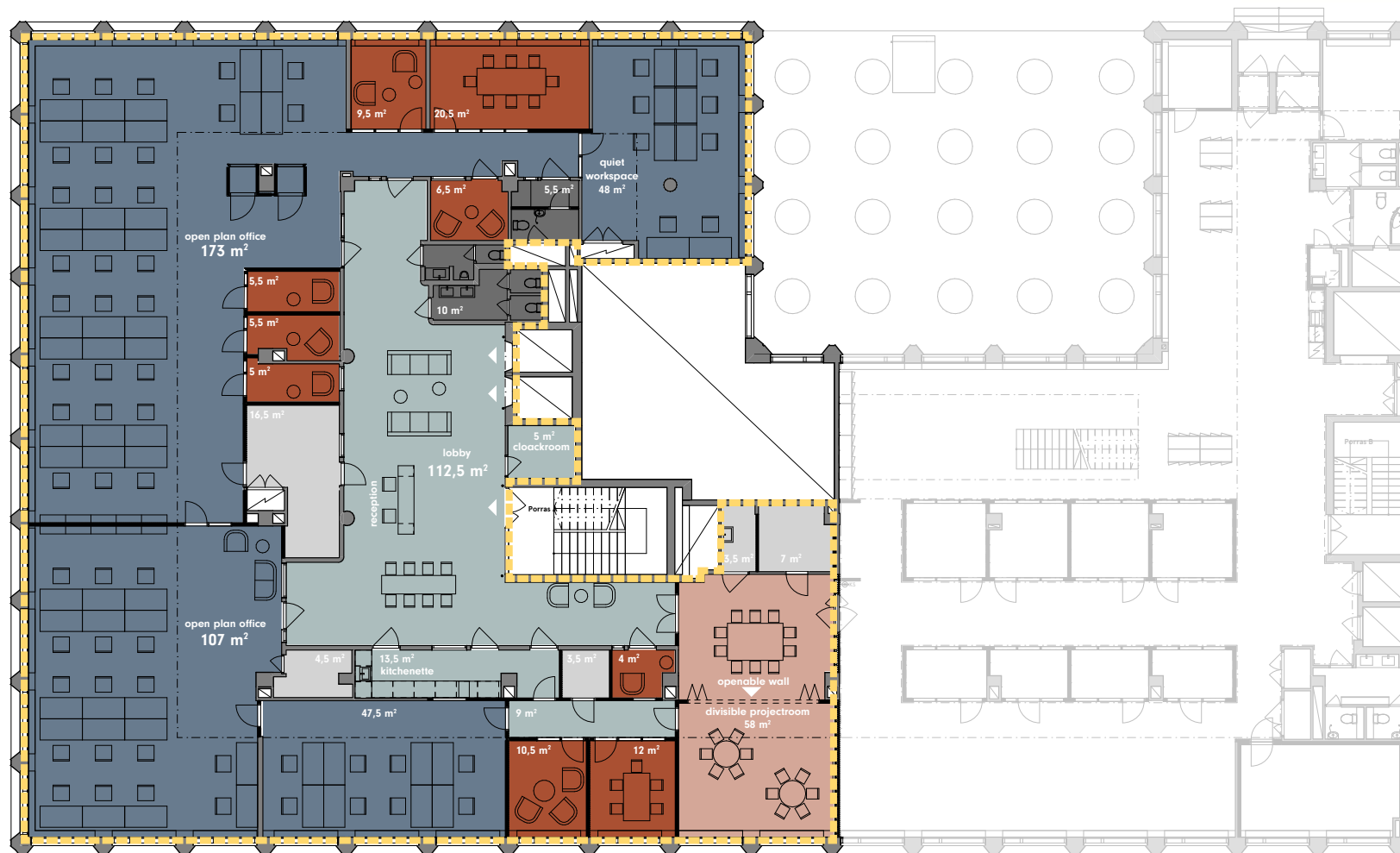
- Workspaces (34 workstations, table size 800 x 1600)
- Meeting rooms (9 rooms and 4 workpods)
- Auditorium
- Working cafe & low intensity
- Toilets
- Storages

The layouts contained in this promotional material are preliminary floor plans for illustration purposes only. Changes may be made during the further planning and development. The final design and execution may deviate substantially from the preliminary drawings. To the declared floor area of the premises is added the proportional part resulting from the distribution of common areas, which is approximately 7% of the floor area.

Kanavaranta 1



# 2<sup>nd</sup> FLOOR: A combination of two floors Workspaces



Example layout:  
Net surface area  
2nd floor **751,5 m²**

- Workspaces (61 workstations, table size 800 x 1600)
- Meeting rooms (5 rooms and 4 workpods)
- Divisible projectroom
- Working cafe & low intensity
- Toilets
- Storages

The layouts contained in this promotional material are preliminary floor plans for illustration purposes only. Changes may be made during the further planning and development. The final design and execution may deviate substantially from the preliminary drawings. To the declared floor area of the premises is added the proportional part resulting from the distribution of common areas, which is approximately 7% of the floor area.

Kanavaranta 1





# Kanavaranta 1

Kanavaranta 1  
00160 Helsinki, Finland

[www.kanavaranta1.fi](http://www.kanavaranta1.fi)

# Total work of art

newsec



Lena Schreiber

Senior Leasing Manager,  
Newsec

+358 50 350 5981  
[lena.schreiber@newsec.fi](mailto:lena.schreiber@newsec.fi)



Deka Immobilien Investment GmbH

Lyoner Str. 13  
60528 Frankfurt am Main  
Germany

[www.deka-immobilien.de](http://www.deka-immobilien.de)